

## .NET Component Installation

A design license is required for each computer a component from componentXtra is installed on. Runtime licenses are free. This software may only be used according to the [License Agreement](#).

### Installation

Using our controls is a simple 4-step process:

#### Step 1 - download and unzip the control package

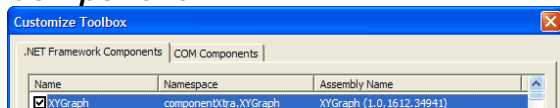
Download and unzip the package. We suggest you place the files in a local directory such as C:\componentXtra that is easy to remember.

#### Step 2 - register the control in your application

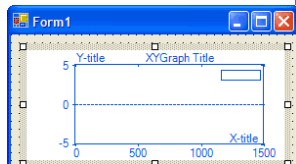
After having installed the control on your PC, you have to tell your application where it is.

#### Registering the Control in Microsoft Visual Studio .NET:

1. Open your solution or project and display the form that you want to add the component to. Choose menu **Tools | Add/Remove Toolbox Items**. Select the **.NET Framework Components** folder. Choose **Browse** and select the *componentXtra Component*.



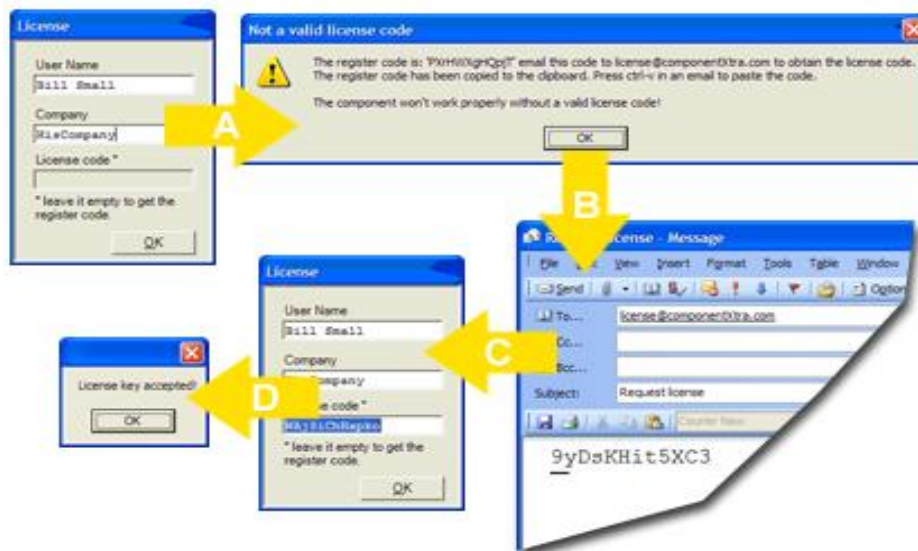
2. After the control appears in the Toolbox, add it to your form.



### Step 3 – get your license

Follow the four actions below:

- A. Type in your name and company information.
- B. Press OK and open your e-mail program.
- C. Type '[license@componentXtra.com](mailto:license@componentXtra.com)' in the 'To' field and paste the register code (Ctrl-V) in the message body and send.
- D. When componentXtra returns the license code, add the component once more to a form and insert the license code.



*(You can skip this step, if you are using the free limited version.)*

### Step 4 - adjust the properties of the control

After you insert the control in your application as described in step 2, you may adjust the properties of the control. To do this, you can change the properties with program code or you can right-click on the control and choose Properties if it is installed on a form.



All available properties and methods are described in the help file for the component.